

Microtopping is a seamless cement-based coating designed to resurface existing surfaces with a modern, elegant finish. Applied by hand in thin layers, it creates a smooth, durable, and stylish look—ideal for both interior and exterior floors, walls, and even furniture. Whether you want a contemporary concrete aesthetic or a custom decorative finish, microtopping offers endless design possibilities with minimal thickness and maximum impact.

The Benefits

- **Seamless Finish** – No joints or grout lines for a clean, modern look
- **Thin Application** – Adds minimal thickness (2–3 mm), ideal for renovations
- **Versatile** – Suitable for floors, walls, furniture in both indoor and outdoor surfaces
- **Strong Adhesion** – Bonds well to concrete, tile, wood, and more
- **Durable & Resistant** – Withstands wear, UV rays, and moisture
- **Customizable** – Available in a wide range of colors, textures, and finishes
- **Easy Maintenance** – Smooth, sealed surface makes cleaning simple
- **Quick Installation** – Fast application with minimal demolition or dust
- **Remodel without removing.** There is no need to remove existing surface material
- **100% Waterproof** – Can be installed in showers and fountains
- **Antibacterial & Antimicrobial** – Will not support mold and will reduce allergen
- **Eco-Friendly Option** – Low material usage



Where Can it be Used

- **Interior Floors** – Living rooms, bedrooms, kitchens, hallways
- **Exterior Floors** – Patios, terraces, balconies, sidewalks
- **Bathrooms** – Shower walls, floors, vanities
- **Walls** – Feature walls, accent areas, fireplaces
- **Stairs** – Both residential and commercial staircases
- **Furniture** – Tables, countertops, shelving
- **Commercial Spaces** – Retail stores, showrooms, restaurants, offices, salons, garages
- **Hospitality Areas** – Hotels, lobbies, spas
- **Kitchens** – Backsplashes, islands, floors, cabinets
- **Poolsides** – Decks and surrounding areas (with proper sealing)



Microtopping is an organic, cement-based material applied by hand with a trowel in multiple thin layers. This artisanal technique creates a seamless, modern finish with natural movement and texture. Because of its handcrafted nature, each surface is unique—these characteristics are not imperfections, but rather the essence of the product's appeal.

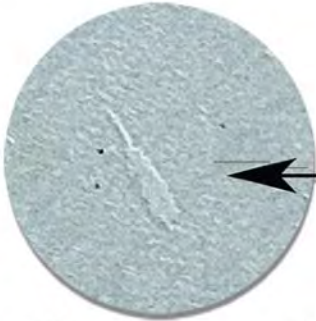
Common Characteristics of Microtopping (Not Application Errors):

- **Tone Variations** – Slight shifts in color are normal and contribute to a natural, concrete-like look
- **Trowel Marks** – Visible strokes or texture from the trowel are part of the artistic application process
- **Porosity** – Microtopping is a breathable material and may display subtle pores or micro-textures
- **Color Shading** – Different lighting and angles can create areas of apparent light and dark tones
- **Surface Movement** – A natural sense of depth and flow in the finish is expected and desired
- **Slight Texture Irregularities** – The handcrafted layers may result in minor surface undulations

These traits are what make microtopping a distinctive and modern surface solution bringing depth, personality, and a handcrafted feel to any space.



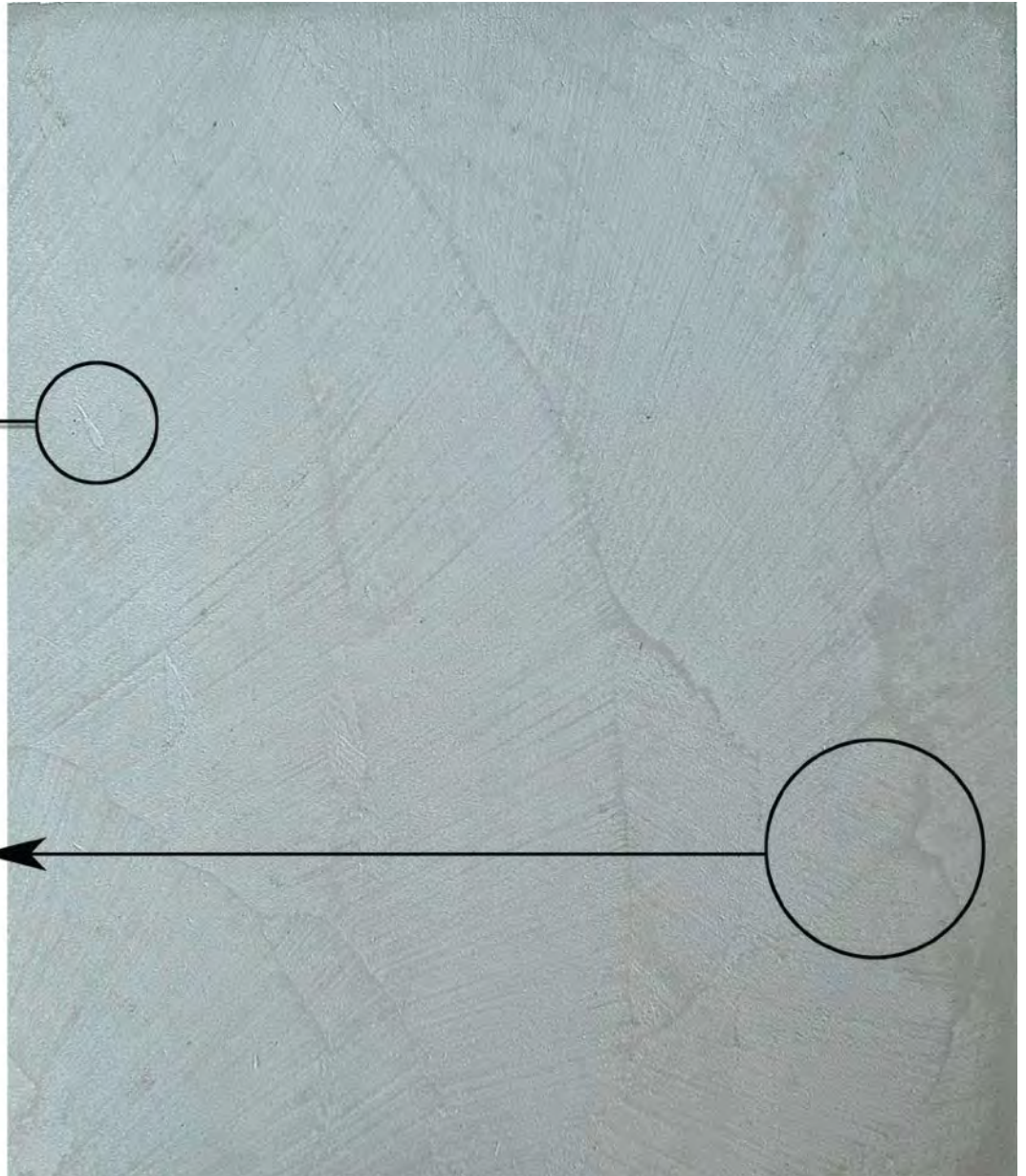
Microcement is an organic material that is applied continuously. It is consistently inconsistent. The final result can only be appreciated at the end of the process once it's sealed.



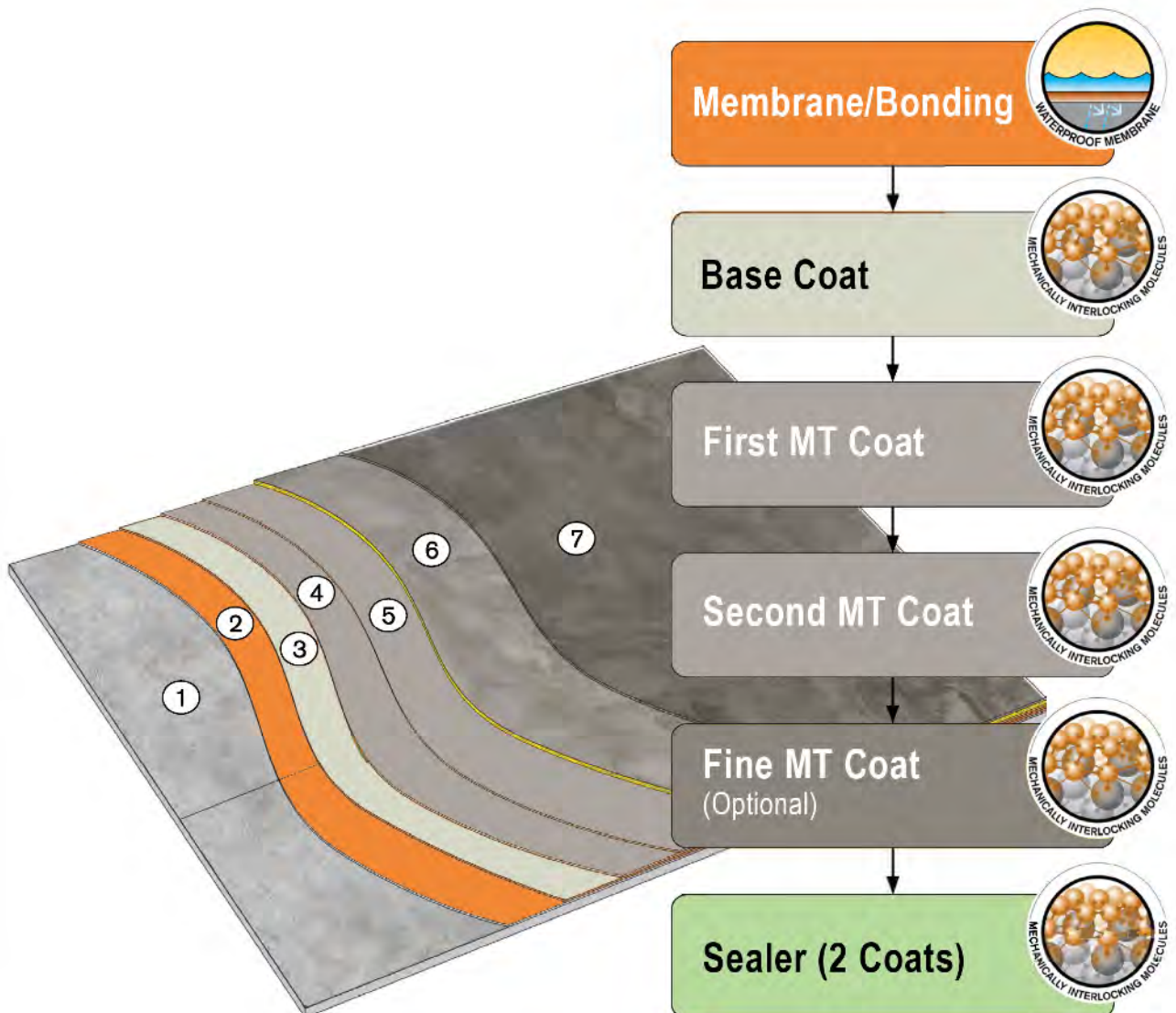
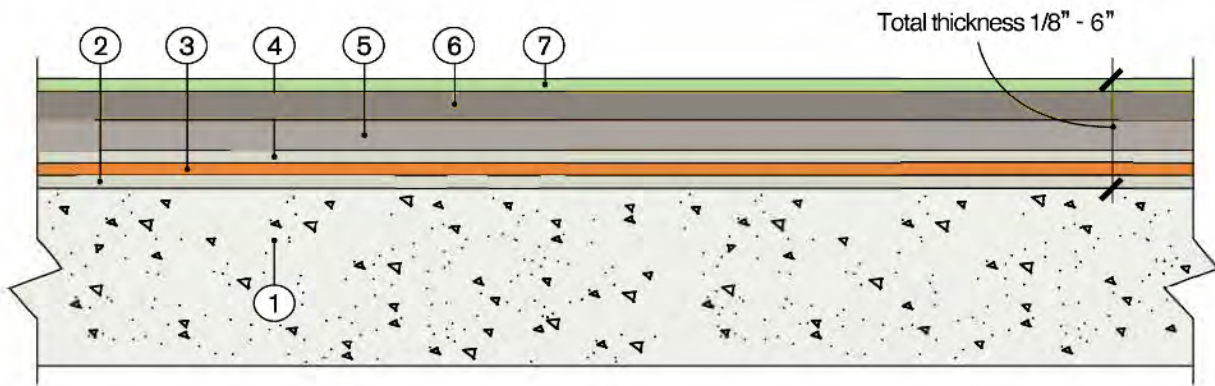
Minor depressions and porosity tend to occur.



Color tone variations, lines caused by the trowel's friction and burn marks caused by the sanding process will always appear.







Surface Preparation

The first step is to ensure that the existing surface is clean, dry, and free of any contaminants such as oil, grease, or dust. Any cracks or holes should be repaired, and uneven surfaces should be leveled to create a solid foundation for the microtopping.



Membrane/Primer Application

A moisture membrane or primer is applied to enhance the adhesion of the microtopping to the substrate. This step is crucial as it helps in preventing delamination and ensures a strong bond between the microtopping and the existing surface.



Base Coat Application

The first layer of microtopping, often referred to as the base coat, is applied using a trowel or squeegee. This coat serves as the foundation for the subsequent layers and is typically applied in a thin, even layer.



Sanding

Sand 1st coat to achieve relative flatness for the 2nd coat to be applied.



Intermediate Coat

After the base coat has dried (usually within 24 hours), an intermediate coat is applied. This coat may include additional textures or patterns as desired. It's important to allow this layer to cure properly before proceeding to the next step.



Sanding

Sand 2nd coat to achieve smooth out the surface for the 3rd coat to be applied.



Final Coat

The final coat is applied to achieve the desired smooth finish.



Sanding

Sand top coat to smooth out any imperfections before the sealer is applied. Client must approve the job at this point.



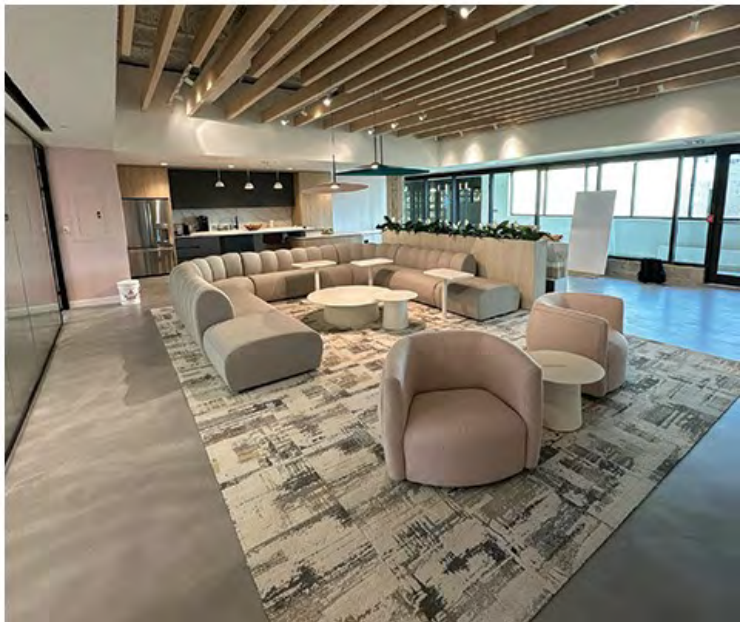
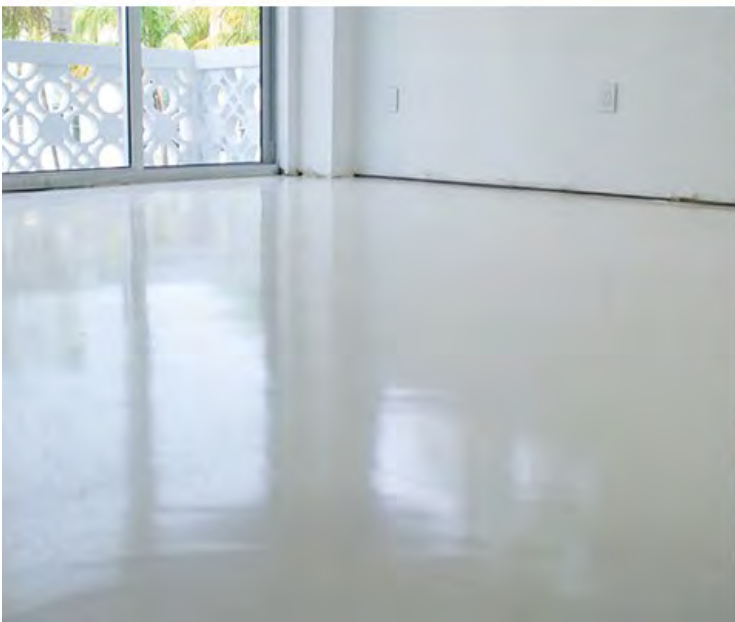
Two Coats of Sealer

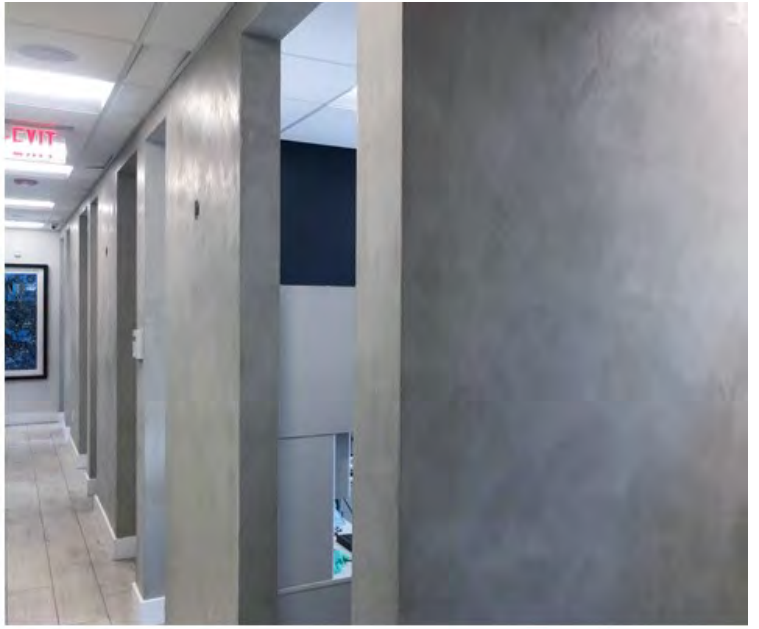
Once the final coat has cured, two coats of sealer are applied to protect the microtopping from stains, moisture and wear. The type of sealer used can vary depending on the environment and the desired finish with options ranging from matte, satin and gloss.

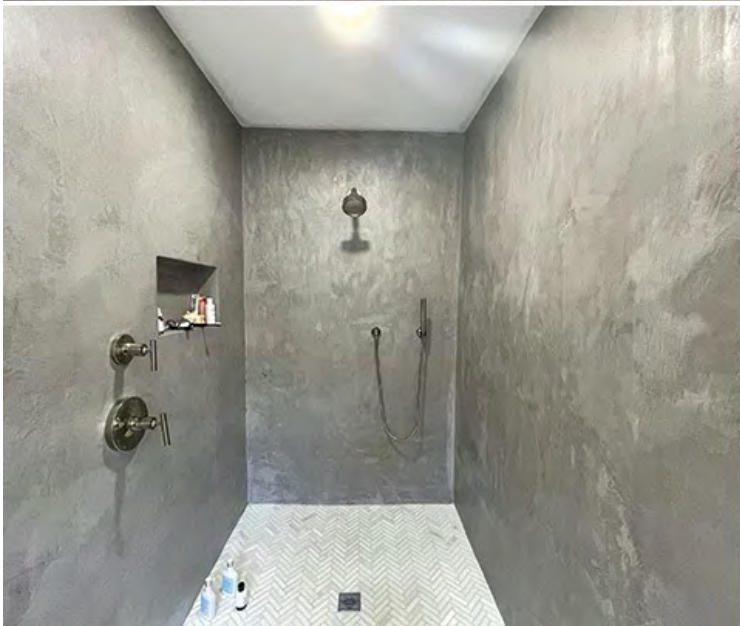


Allow to Cure

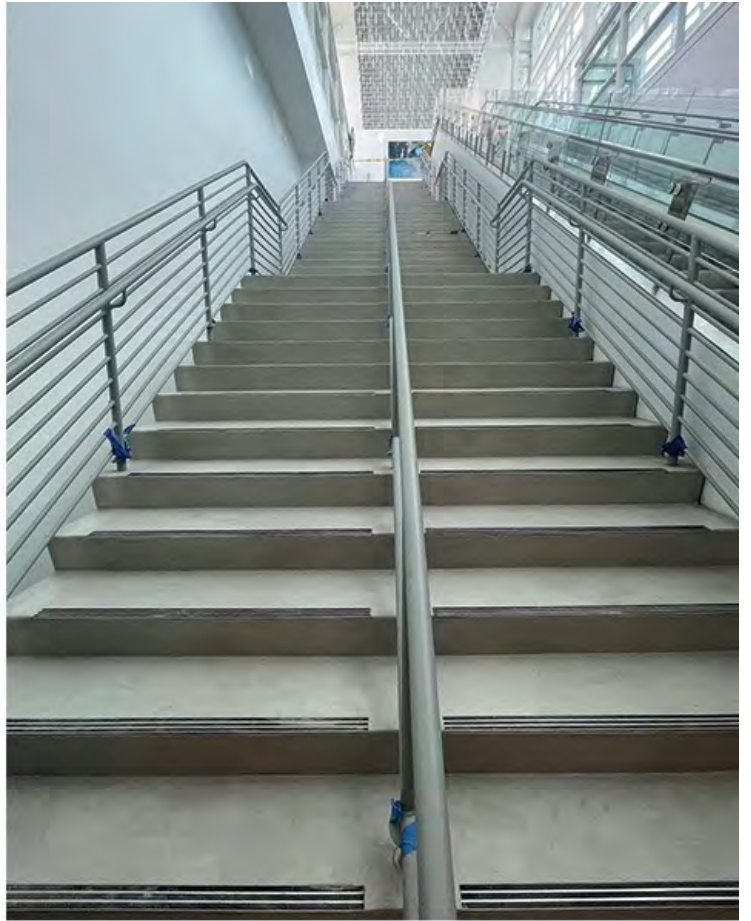
Allow 24 to 48 hours for walk-in traffic and 72 hours before moving furniture or rolling in any carts, ladders or equipments.











Welcome to the world of microtopping floors! Your newly installed microtopping surface is a testament to modern aesthetics and durability. To ensure its longevity and lasting elegance, follow these guidelines for microtopping maintenance.

Microtopping Maintenance Do's:

1. **Gentle Daily Cleaning:** Sweep or dust mop the microtopping surface daily using a soft-bristle broom or a dust mop to remove dirt and dust. For a deeper clean, use a microfiber mop or a soft-bristle brush with a mild, pH-neutral cleaner mixed with water. Opt for **products specifically designed for microtopping floors** to maintain their unique finish.
2. **Immediate Spill Cleanup:** Promptly wipe up spills using a soft cloth or a damp mop with a gentle detergent and warm water. Address solid spills by using a plastic scraper or spatula to prevent potential surface damage.
3. **Non-Abrasive Cleaning Tools:** Utilize non-abrasive cleaning tools such as soft-bristle brushes, microfiber cloths, or foam mops to avoid scratching the microtopping surface.
4. **Protective Mats or Rugs:** Place mats or rugs strategically in high-traffic areas and entryways to capture dirt and prevent abrasive particles from affecting the microtopping finish. Also protect the feet of chairs, tables and furniture with **Surface protection felt or plastic floor pads**.
5. **Regular Deep Cleaning:** Periodically perform a deep clean using a mild detergent or a **specialized microtopping floor cleaner**. Avoid harsh chemicals, acids, vinegar, or citrus-based cleaners, as they can compromise the microtopping's integrity.
6. Apply **protective Wax**. Mop with microfiber whenever is consider needed.
7. Avoid applying tape directly to the floor. The adhesives on any type of tape will seep into the sealer and if left for too long it can even rip the sealer coat.

Microtopping Maintenance Don'ts:

1. **Avoid Harsh Chemicals:** Refrain from using acidic cleaners, vinegar, citrus-based products, or abrasive cleaners, as these can damage the microtopping finish.
2. **Say No to Rough Tools:** Avoid using abrasive tools, steel wool, stiff-bristle brushes, or scouring pads, as they may scratch or harm the microtopping surface.
3. **Prevent Standing Water:** Excessive water or moisture can adversely affect the microtopping. Wipe up spills promptly and avoid leaving standing water on the surface.
4. **Handle Heavy Objects with Care:** Protect the microtopping from heavy impacts, and avoid dragging or dropping heavy furniture without proper padding to prevent potential damage.
5. **Steer Clear of Oil-Based Products:** Refrain from using oil-based soaps or cleaners, as they may leave a residue, compromise the microtopping's appearance, and attract dirt.
6. Avoid applying tape directly to the floor. The adhesives on any type of tape will seep into the sealer and if left for too long it can even rip the sealer coat.

Micro-topping is a cementitious overlay that can be applied onto any hard surface. It is an organic material that is porous and individual. Non-two microtoppings are the same and they all might reflect a different final finish even if it was treated with the same system and applied by the same team. The final result can only be as good as the concrete surface we have to start with.

- A. **FLAWS** - You should be aware and expect microtopping to have some flaws; color variations, trowel marks, unique marks from installation equipment, sealer marks, difference in trowel patterns, scuff marks, etc., although not always present are common traits of microtopping.
- B. **DAMAGE REPAIR** - Repairs to these floors or walls are difficult since it is applied as one seamless surface. A microtopping floor is a finished product and should be treated as such. Just because it is "cement" doesn't mean it can't be damaged. You should make certain your contractor, employees, vendors and any others who will be working over your new floor treat it as though it were any other flooring system. It should be covered with appropriate protective products when construction is ongoing, equipment is being placed, moving your furniture, fixtures, etc. into place and stocking your facility with goods before opening or operations begins.
- C. **COLOR:** It is mutually agreed and accepted that colors chosen from Seamless Surfaces color charts are subject to variation dependent upon lighting in which its viewed and/or the substrate in which it is applied. Color variations and patterns within the color coat are natural and Seamless Surfaces believes this adds to the natural, original, and beautiful look of the final product. Variations in the final product are also caused by substrate texture, hand troweling, poured concrete, substrate angles, substrate thickness, stain mixture, humidity, climate, and aftercare.
- D. **NOISE & DUST** – In the initial part of the process and during a short period at the end there will be loud noise from the grinder, chipping away repairs, demolition, buffing, etc. There will also be minor dust. The client is responsible to take proper measures and inform the building's association neighbors and others. Cover sprinklers and turn off fire alarm. If our work needs to get stopped because of noise there will be a charge per diem for time lost.
- E. **CRACKS & STAINS:** Seamless Surfaces is not responsible for the nature of the substrate. Existing cracks in the substrate will be patched and an anti fracture membrane will be installed to reduce the possibility of having the original crack telegraph in the form of hairline fractures. Any damage done prior to commencement of the contract including un-removable stains from paint, glue, stucco mud, permanent marker or any other contaminants may show through the finished work. Additional costs will be required to remove preexisting stains.
- F. **CRACKS** — Work done by Seamless Surfaces that includes use of an overlayment, does not guarantee that existing cracks will be covered permanently. Existing cracks, tooled expansion or control joints may eventually crack or re-open once patched or filled & show through finished work, or become visible at a later date that may result from future substrate settlements. Seamless Surfaces does not assume the liability from other concrete subcontractors. It is recommended to have baseboards removed.
- G. The Customer is responsible for advising Seamless Surfaces of all prior chemical treatment to which the concrete substrate has been subjected.
- H. **DAMAGES** — Seamless Surfaces performs surface applications only. Seamless Surfaces is not responsible for the work of or damage caused by other trades on any job. Any repairs will be charged separately

- I. **FINAL APPROVAL** — Customer agrees to be personally available or assign a particular agent to represent them for their final inspection of sealer and understands final payment must be made at that time. Client understands that the sealer is permanent and will enhance the color of the cement making the color variations look more pronounced, darker and shinier. Client understands that there cannot be any modifications or fixes after the floor has been sealed and that in some occasions faint roller marks from the sealer application may remain.
- J. **FINAL SEALER** — There can be no final sealer applied without acceptance of layout, color and effect and payment from the Customer. Customer agrees that any designated agent present at inspection of color application is authorized to sign the acceptance and make the final payment. Customer will be bound by agent's signature as if it were the Customer's.
- K. **WARRANTY** — Seamless Surfaces provides a standard 1-YEAR WARRANTY (see Seamless Surfaces Warranty) unless otherwise noted, and is pursuant to the Project Acceptance date. Materials used on the project site may carry a separate warranty from the manufacturer. The warranty is absolutely dependent upon the sealing of the product by Seamless Surfaces; sealing cannot be done until the project acceptance is in writing.
- L. **MOBILIZATION** – If by some reason we are asked to stop, demobilize and return at a later date to continue the process there will be an additional \$1000 charge for mobilization.
- M. **FLOOR LEVELING** – We do not guarantee floor flatness. Existing undulations or differences in tile height can produce a wave effect. The terms smooth, flat and level are used as relative terms describing our intention to deliver an improved surface.
- N. **MAINTENANCE AND CARE** - You will be supplied with maintenance and care information for your new floor system. It is important that you fully read and understand that information and are prepared to follow the recommendations. Warranties cannot be honored if maintenance instructions are not followed. Most call backs regarding floor finish failures are due to maintenance procedures not being properly followed.
Avoid spilling harsh chemicals, coffee, sodas, vinegar, fluid oil and any other liquid that can penetrate and damage the concrete. Although every effort will be made, if repairs are required there will be no warranty or guarantee that the concrete will return to its original state.
Use only neutral cleaners with a PH Balance of 7, water & soap or a specific recommended cleaner.
- O. **TIME OF COMPLETION** – Completion time is only an educated guess based on past experiences but delays in the form of mistakes, or unforeseen events in the polishing process or other situations may occur. You are making a substantial investment in the product we are polishing and we intend to take the time to perform our task properly. Being this an exterior application It is recommended to start the work before the heavy rainy season begins in Mid June.
- P. **OTHER** – There are other issues that can and will arise during the applications of decorative floor systems. We want you to be aware of any potential issues or any unforeseen problems that arise during the process. We will always keep you involved in any decision that will have an effect on the finished product you are expecting and will come to an agreement together. Each of us will sign off on that agreement or leave an electronic written trail before we proceed with any changes.



TERMS AND CONDITIONS

PAYMENT TERMS - The payment terms for our contract are as follows: 1) Private Individuals are required to submit a 25% deposit prior to begin the project to lock in a starting date, 25% the day the project is started, 25% once 80% of the job is completed and final payment upon completion of project or invoice submittal, whichever comes first unless noted differently on the Estimate document. All checks must be made payable to Seamless Surfaces.

SCHEDULING - Client needs to notify Seamless Surfaces at least three weeks in advance to schedule the work. If scheduled date to start is changed more than twice and additional \$1,000 will be charged to cover the per diem hours of labor lost. Working hours are Monday to Saturday from 8am to 6pm. If the schedule requires work outside this schedule, a surcharge of 20% will be added.

SITE CONDITIONS - Client must provide proper site conditions; otherwise additional charges may apply. Areas to be serviced must be free of other trades to allow productivity. It should also be free of any furniture, fixtures and appliances that will prevent us from properly treating the surface of the floor or wall. We are not responsible for damages made while moving any furniture or appliances.

Dumpster & Disposal: Client is responsible to provide a dumpster to dispose of debris and all trash and for its removal at the end of the project.

Storage: proper secured storage needs to be provided for equipment, tools and generators.

Fire Alarm should be disconnected and sprinklers covered.

A LIFT to rapidly reach and apply the material in high places is required and is not included in this proposal.

UTILITIES REQUIRED

Electricity: Client needs to provide adequate electric power. If large polishers are required we need availability to a 3 phase power panel that provides 208 or 480 Volt current and available breakers within 100 feet. In case the appropriate power is not available there will be additional costs for the generator rental and a secured area to stage the generator will be needed. Approx \$950 a week.

Water: Water is to be located within 100 feet of the job site work area.

PROTECTION - No protection of finishes unless included in the proposal. If finishes are in place, it is the owner's responsibility to protect finishes air/water tight prior to our arrival. Seamless Surfaces is not responsible for subsequent damage and/or contamination to Seamless Surfaces work. All work performed by Seamless Surfaces must be protected from damage by the owner or Contractor working at the job, by using Ramboard, Cardboard, or carpet face down. Tape should not be used directly against the floor as it may damage the sealer. Scratches or damage to finished work will be repaired by Seamless Surfaces only if additional payment is received in advance and a new agreement is made.

ADDITIONAL WORK - Additional work not included in this proposal will be added separately. This is common for unforeseen circumstances such as demo of failing existing toppings, when there are changes in the scope of work or when the ability to determine labor and materials or repairs is being prevented by paint or other flooring.

DELIVERY AND CONDITION OF AREAS: All areas to be worked on need to be available from the moment we start the project to allow for a continuous flow of productivity. It is assumed that the formed concrete substrate will have some surface deviations no greater than 1/8 over 5 feet. It is also assumed that a standard surface profile without excessive texture, voids, or roughness may require additional materials and labor, resulting in extra costs. Any unforeseen substrate conditions will be assessed prior to installation.

ACCEPTANCE: The client, contractor, supervisor or owner is responsible to look at the work the moment is completed and demobilization starts. If there are no comments, requests for further improvements within 48 hours, the project will be considered accepted and finalized. Any future mobilization will result in additional charges.