



**SEAMLESS
SURFACES**

Exterior Flooring Solutions

The Problem With Exterior Floors



Stamped concrete delaminates due to poor preparation.



Thin Paint chips off



Existing floor goes out of fashion and looks outdated



Installation is lengthy, noisy and disruptive to access to residence or business



It gets dirty fast and Proper maintenance is costly



Replacement is noisy, dirty, expensive and blocks access to units

Our Solutions



We do proper removal of stamped concrete for necessary adhesion of the new material installed.



We apply commercial grade coatings that will not peel.



We apply highly durable yet thin coats with integral color that can be easily customized and replaced to the latest trend.



We use the latest technologies for fast cure, odorless and minimally disruptive coating installations.



We apply a stain resistant sealer that is easy to clean and maintain.



We re-coat with fast cured epoxies instead of removing tile.

Our Systems

Resin Based



Cement Based



Preparation



We cover tile with fast cure Epoxy or Self Leveling cement to cover tile instead of removing it to avoid the noise and making the process simpler and less expensive.



If we're applying a new coating we mechanically remove the the previous coatings all the way to the original slab to assure proper adhesion.

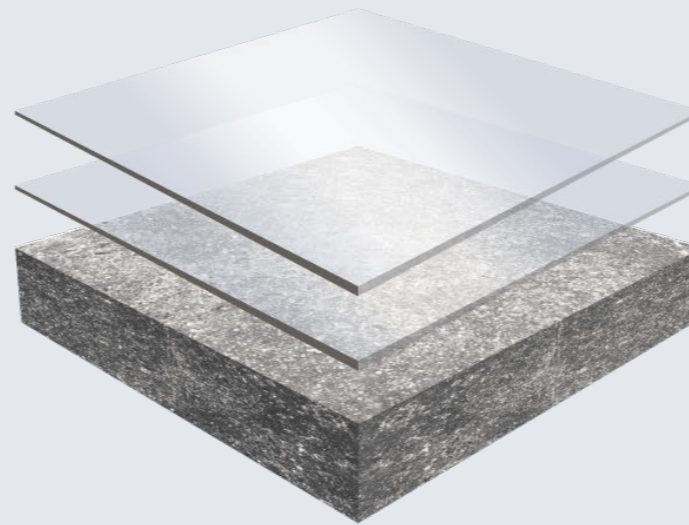
Benefits: Assure better adhesion, minimize cracking and extend the durability of the new coating system

Disruption time with Epoxy system: 3 hrs per area being worked on.

Cost: \$1.35 to \$3.75 depending on complexity and material required.



Grind and Seal with Anti-Slip UV Sealer



- ↔ UV Sealer with Anti-Slip
- ↔ Optional Water-born Epoxy
- ↔ Grind & Fix Concrete



Benefits: Low Cost, Protection against wear and tear, Resistance to chemicals, Improves Aesthetic appeal, It's stain resistant, It's easy to maintain, It's Mold and Mildew Resistant, Extends the life of the floor, Reduces dust, It's anti-slip.

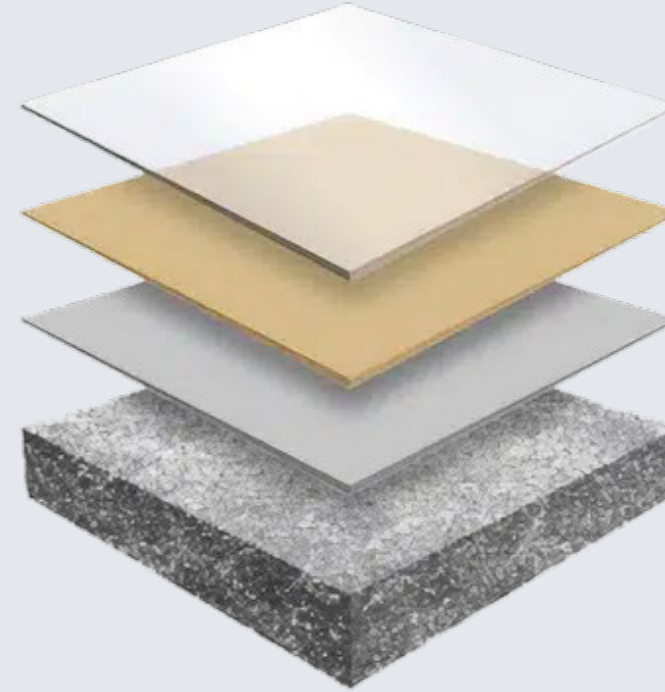
Disruption time during installation: 2-3 hours

Area that can be completed per day: 2-3K SF

Cost: \$1.90 - \$2.90 a SF (not including floor preparation)



Fast Cure Epoxy Paint with Anti-Slip



Topcoat
Polyurea or Aliphatic Urethane

Solids
High Build Epoxy Color Chart

Primer
Low Viscosity 2 Part Epoxy



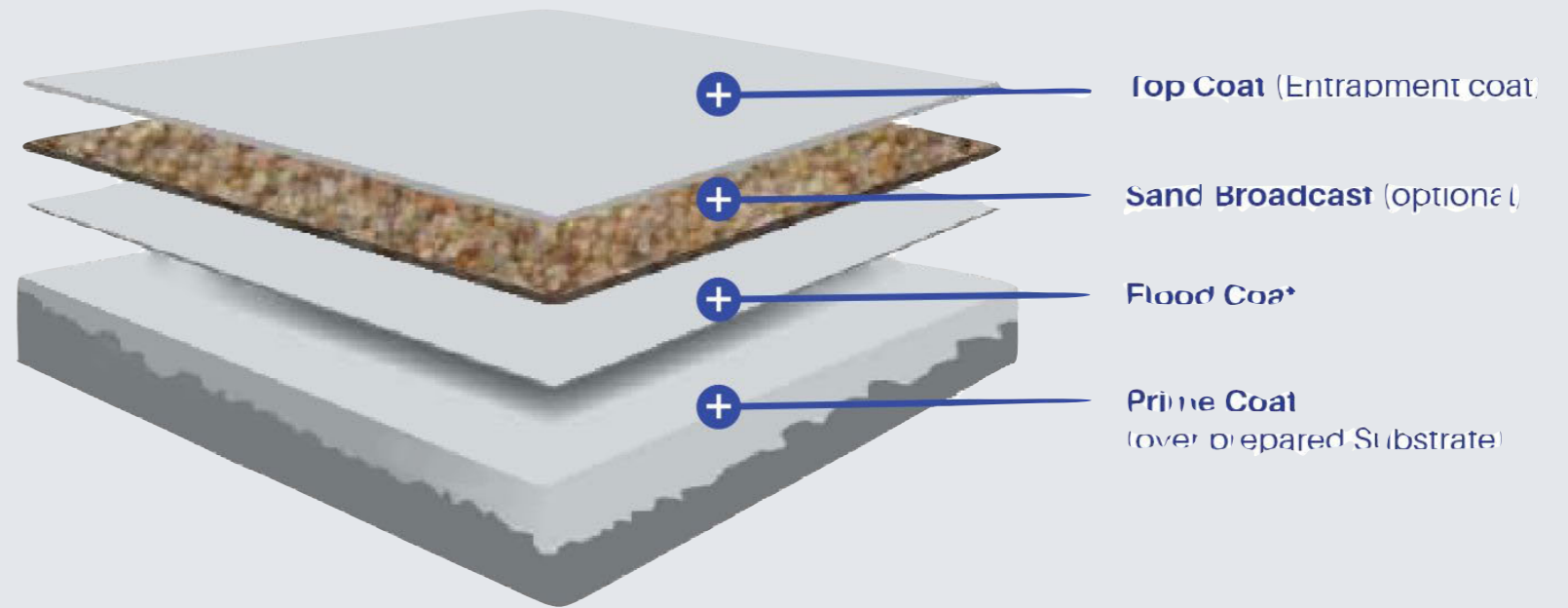
Benefits: Low Cost, Protection against wear and tear, Hides all defects on concrete slab, Improves Aesthetic appeal, It's easy to maintain, It's Mold and Mildew Resistant, Extends the life of the floor, Reduces dust, It's anti-slip.

Disruption time during installation: 3-5 hours

Area that can be completed per day: 2-3K SF

Cost: \$2.90 - \$3.90 a SF (not including floor preparation)

Fast Cure Epoxy with Sand



Benefits: Protection against wear and tear, Hides all defects on concrete slab, Improves Aesthetic appeal, It's stain resistant, It's easy to maintain, Extends the life of the floor, Comes in multiple color options, Reduces dust, Hi anti-slip properties.

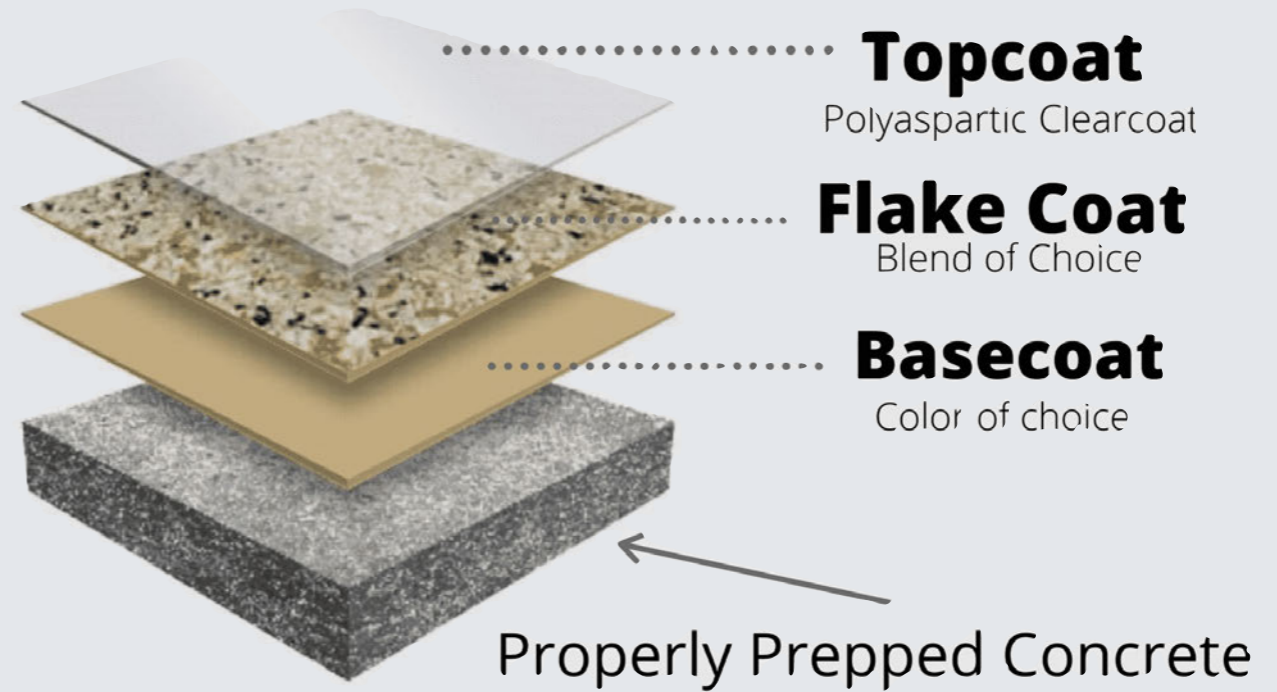
Disruption time during installation: 3-5 hours

Area that can be completed per day: 2-3K SF

Cost: \$3.90 - \$4.90 a SF (not including floor preparation)



Fast Cure Epoxy Flakes with UV Sealer

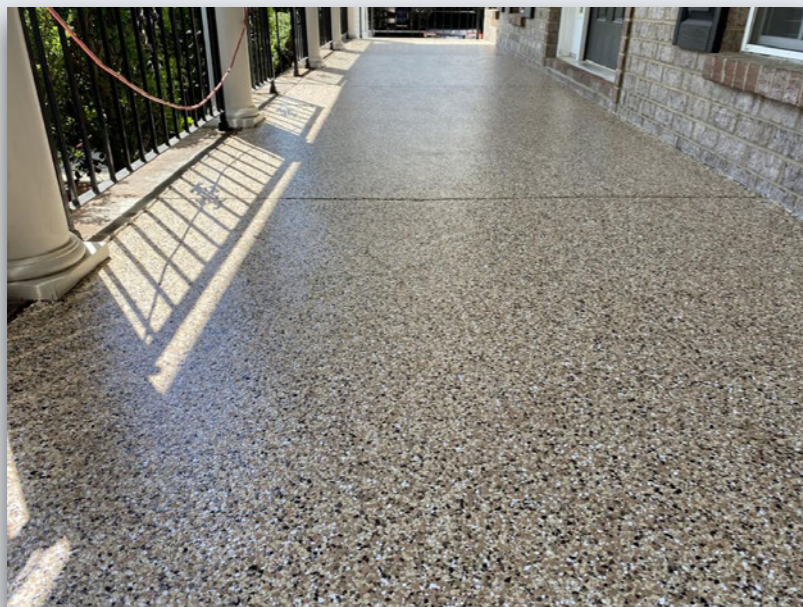


Benefits: Protection against wear and tear, Hides all defects on concrete slab, Resistance to chemicals, Improves Aesthetic appeal, It's stain resistant, It's easy to maintain, It's Mold and Mildew Resistant, Extends the life of the floor, Reduces dust, Come in infinite color combinations and flake sizes, Hi anti-slip properties.

Disruption time during installation: 3-5 hours

Area that can be completed per day: 1.5-2.5K SF

Cost: \$4.90 - \$5.90 a SF (not including floor preparation)





Fast Cure Double Broadcast Epoxy with UV Sealer

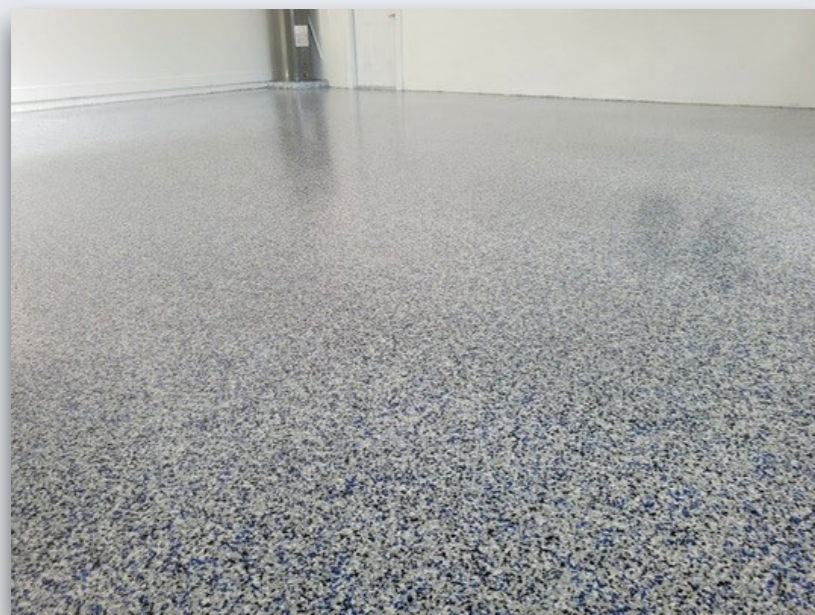


Benefits: Protection against wear and tear, Hides all defects on concrete slab, Resistance to chemicals, Improves Aesthetic appeal, It's stain resistant, It's easy to maintain, Extends the life of the floor, Comes in many color options, has Hi anti-slip properties.

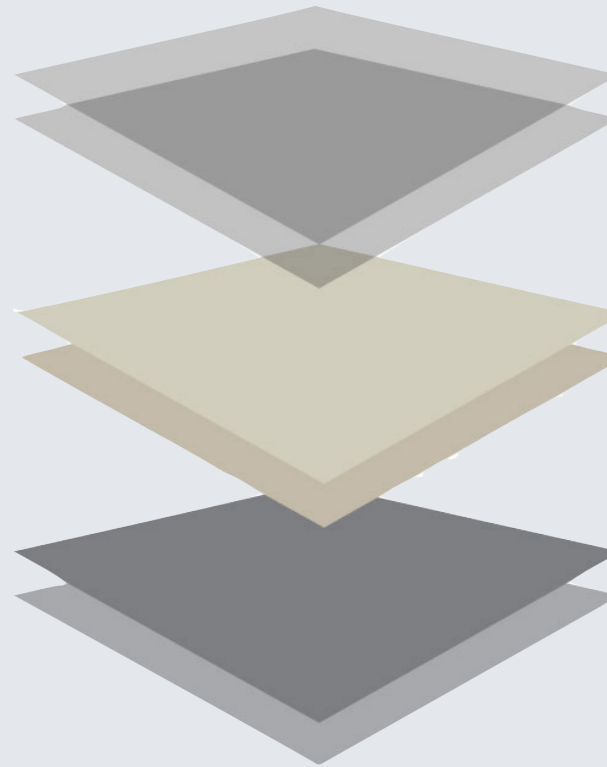
Disruption time during installation: 3-5 hours in between each broadcast application.

Area that can be completed per day: 1.5-2.5K SF

Cost: \$6.85 - \$7.85 a SF (not including floor preparation)



Troweled Microtopping Coating



UV Sealer Coating

Two coats of troweled microcement

Concrete slab preparation

Benefits: Hides all defects on concrete slab, Improves Aesthetic appeal, Sealer is stain resistant, It's easy to maintain, Color is integral, Extends the life of the floor, Comes in many color options, has anti-slip texture.

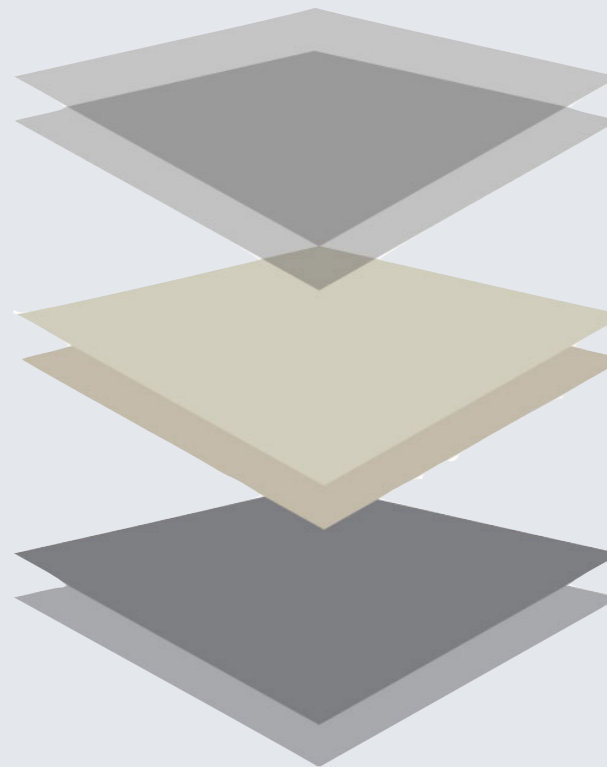
Disruption time during installation: 4-7 hours

Area that can be completed per day: 1.5-2K SF

Cost: \$5.50 - \$6.50 a SF (not including floor preparation)



Knockdown Cement Coating



UV Sealer Coating

Base coat and knockdown coat of cement

Concrete slab preparation

Benefits: Hides all defects on concrete slab, Improves Aesthetic appeal, Sealer is stain resistant, Color is integral Resistant, Extends the life of the floor, Comes in many color options, has anti-slip texture.

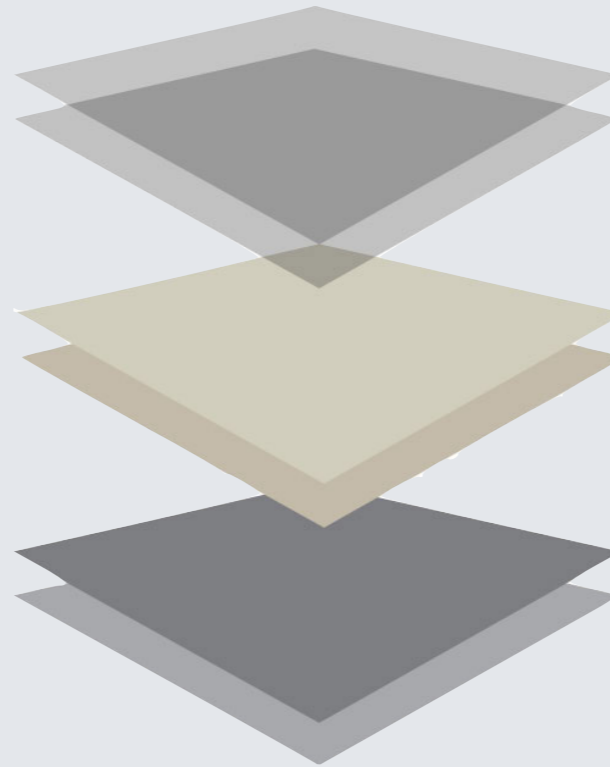
Disruption time during installation: 3-5 hours per cementitious coat.

Area that can be completed per day: 1.5-2K SF

Cost: \$5.50 - \$6.50 a SF (not including floor preparation)



Rolled Cement Coating (Decopox)



Urethane Sealer Coating

Base coat and knockdown coat of cement

Concrete slab preparation

Benefits: Hides all defects on concrete slab, Improves Aesthetic appeal, Color is integral and highly customizable, Extends the life of the floor, Comes in many color options, has anti-slip texture.

Disruption time during installation: 3-4 hours per cementitious coat.

Area that can be completed per day: 2-3K SF

Cost: \$6.50 - \$7.50 a SF (not including floor preparation)





Why Us?

We are dependable and only have 5 Stars Google Reviews



We use the latest technologies in materials to offer you the latest products with the fastest turnaround

Our crew has over 15 years of Experience in the flooring industry



We are committed to offer you reliability cleanliness and a superior quality installation.



Price:

- It is assumed that the total project is above 10K sf.
- Steps and landings are charged separately depending on complexity
- Major repairs on the slab and joint filling is charged separately
- Generator is charged separately
- Client is responsible to provide a dumpster; we are not responsible for disposing of trash outside the job site.
- Additional mobilizations will be charged separately.

Waiting times:

- “Disruption Time” refers to the period of time in which no one can walk over the material installed
- Drying times of materials vary dependent of the material type and ambient humidity. We only offer estimates based on experience but actual times might change
- The expected waiting time is per layer when applying wet materials. Some systems have several layers and there is a waiting time per each layer.